

# Project: Applied Micro in Stata, RoME 2022

Author 1<sup>\*</sup> and Author 2<sup>†</sup> and Author 3<sup>‡</sup> and Author 4<sup>§</sup>...

November 24, 2022

## Abstract

Abstract here.

---

<sup>\*</sup>Affiliation 1. Email: **email 1**

<sup>†</sup>Affiliation 2. Email: **email 2**

<sup>‡</sup>Affiliation 3. Email: **email 3**

<sup>§</sup>Affiliation 4. Email: **email 4**

## **1 Introduction**

## **2 Replication of paper number 1**

We replicate [Bandiera et al. \(2020\)](#). See Figure [1](#) and Tables [1–5](#).

## **3 Replication of paper number 2**

We replicate [Giorcelli and Moser \(2020\)](#). See Figures [2](#) and [3](#) and Table [6](#).

## **4 Replication of paper number 3**

We replicate [Wolfers \(2006\)](#). See Figure [4](#).

## **5 Replication of paper number 4**

We replicate [Nekoei and Weber \(2017\)](#). See Figures [5](#) and [6](#) and Table [7](#).

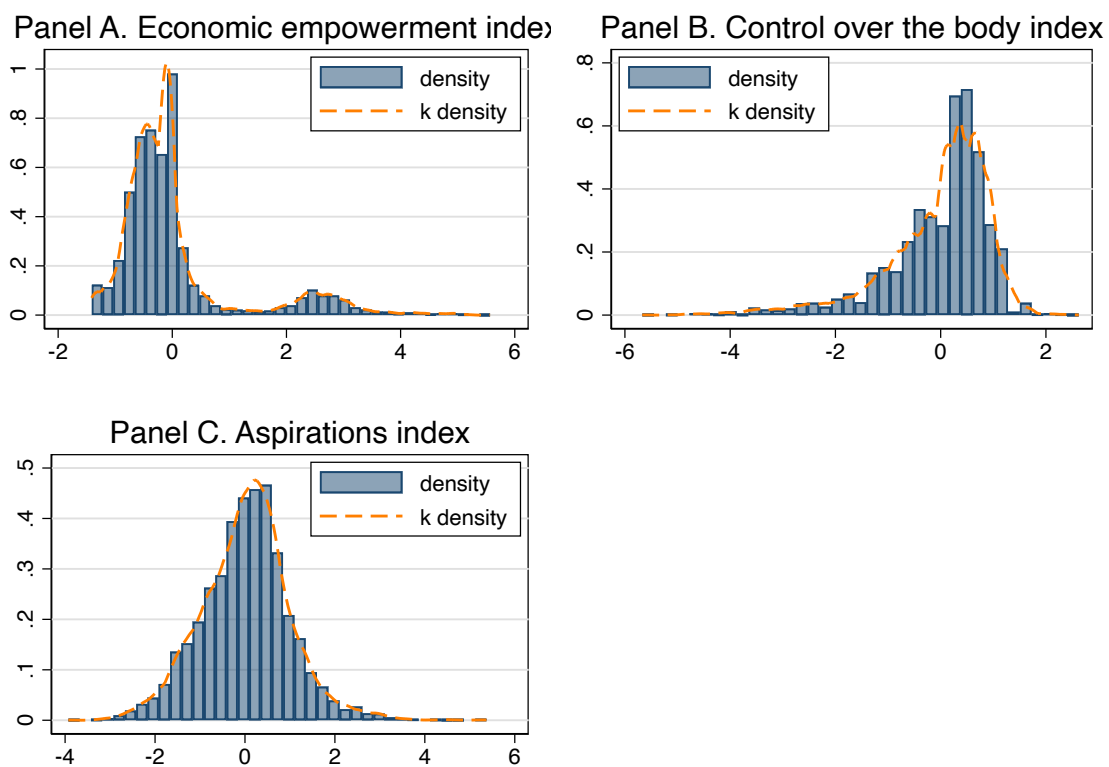
## **6 Replication of paper number 5**

We replicate [Goldsmith-Pinkham et al. \(2020\)](#). See Figure [7](#) and Tables [8](#) and [9](#).

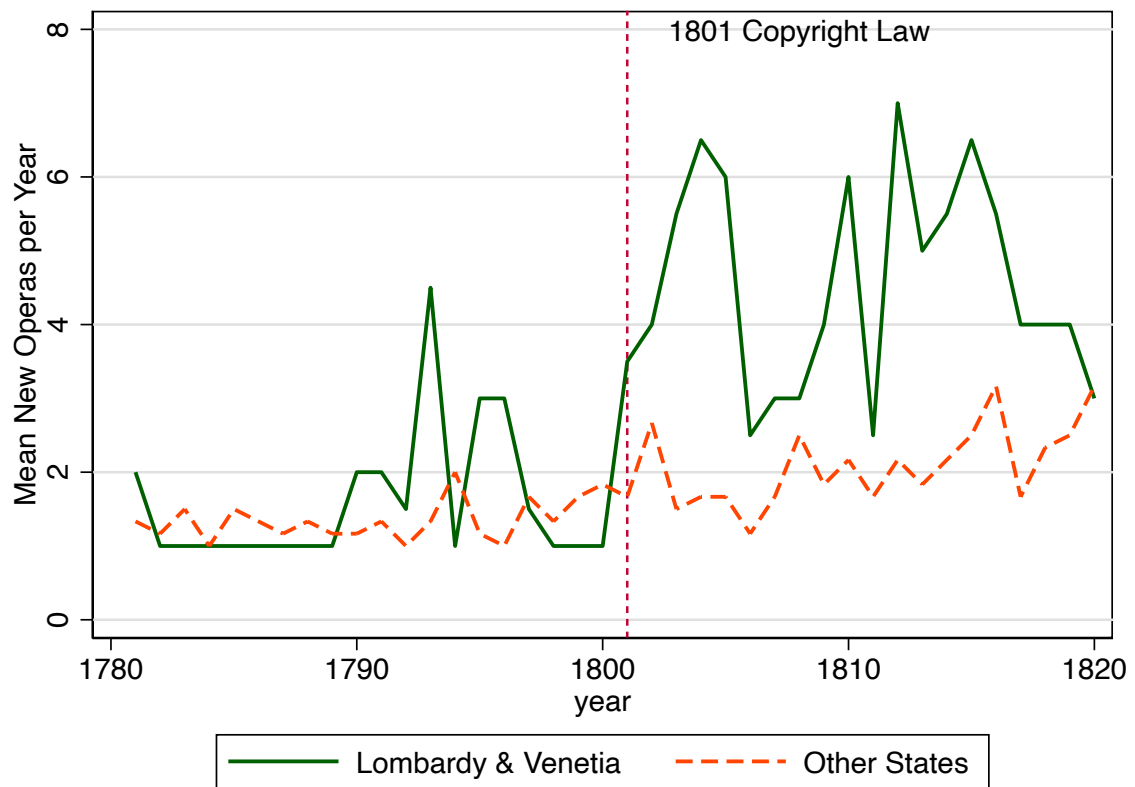
## **7 Conclusion**

## 8 Figures

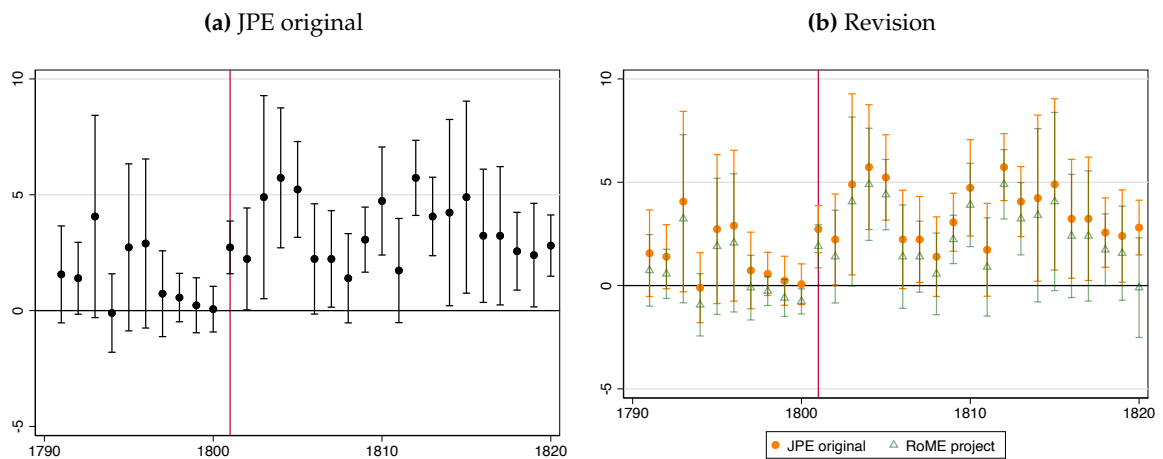
Figure 1: Uganda histogram of baseline indices



**Figure 2: Operas: Time series of treated and control states**

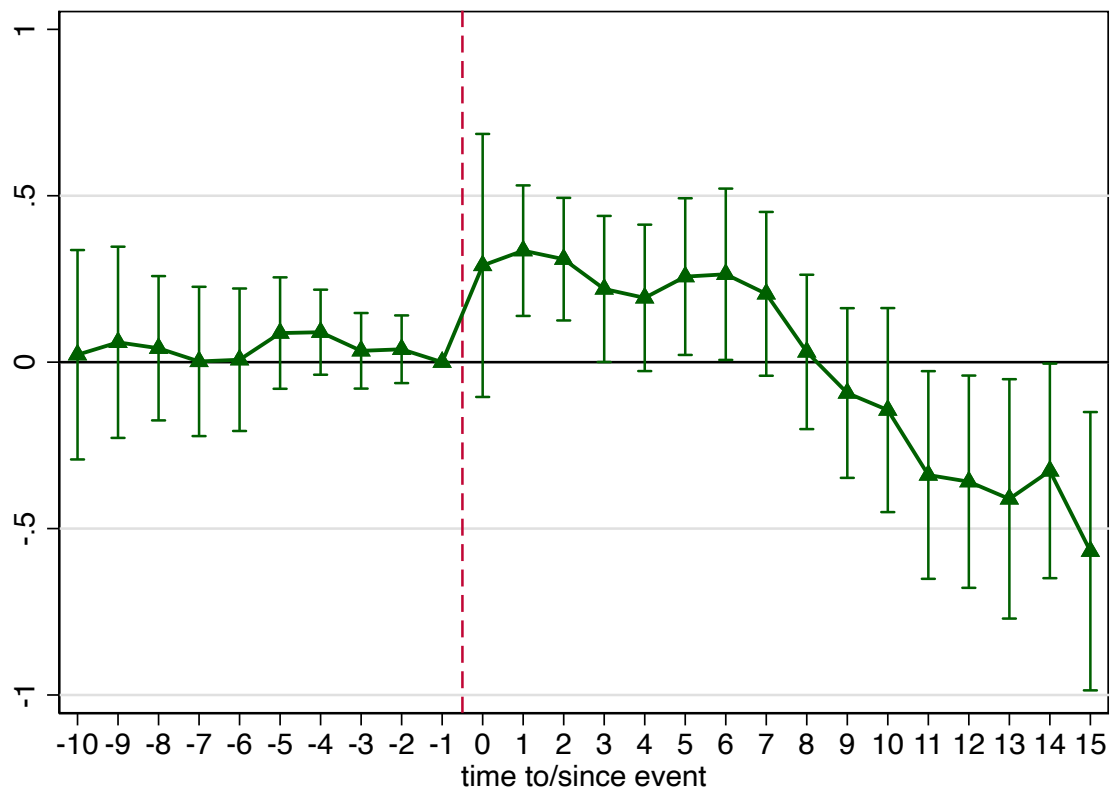


**Figure 3: Time-varying effects of copyright on opera creation**

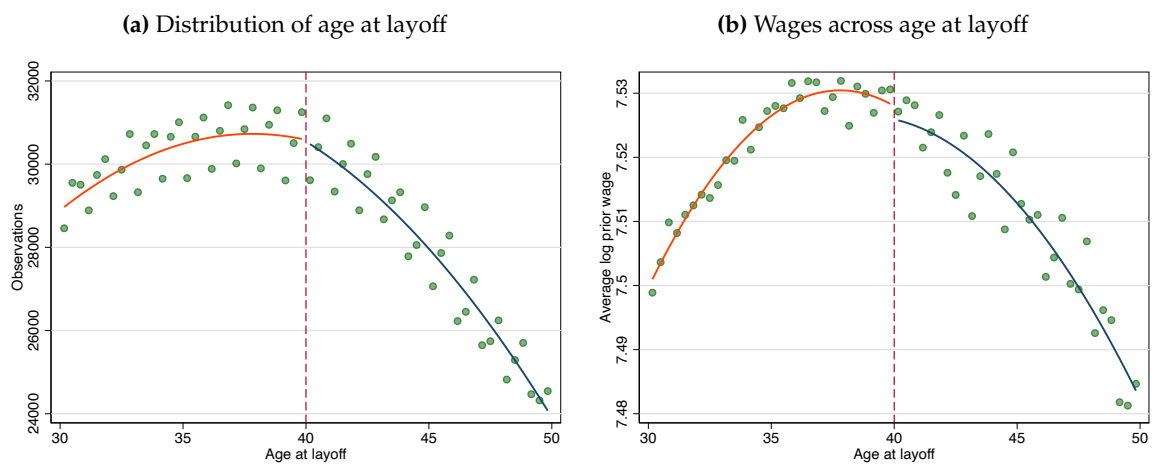


Notes:.

**Figure 4:** Divorce Laws and Divorce Rates: Staggered DiD

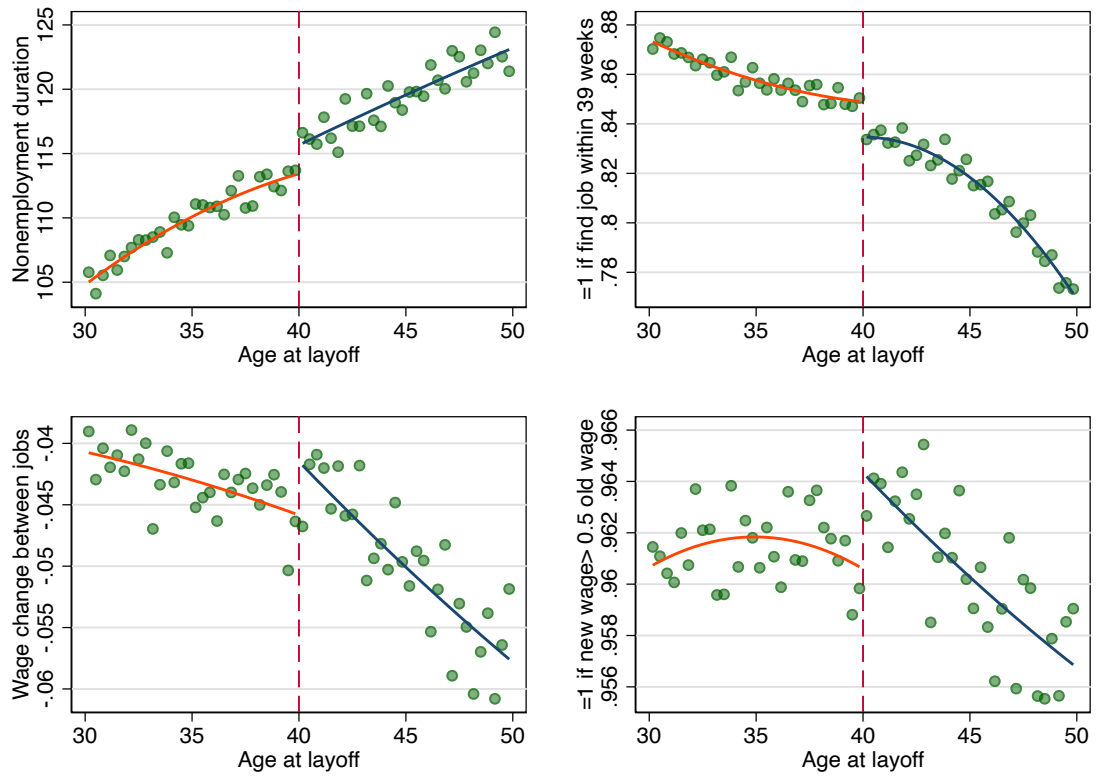


**Figure 5:** Unemployment Benefits: RD Validity Checks

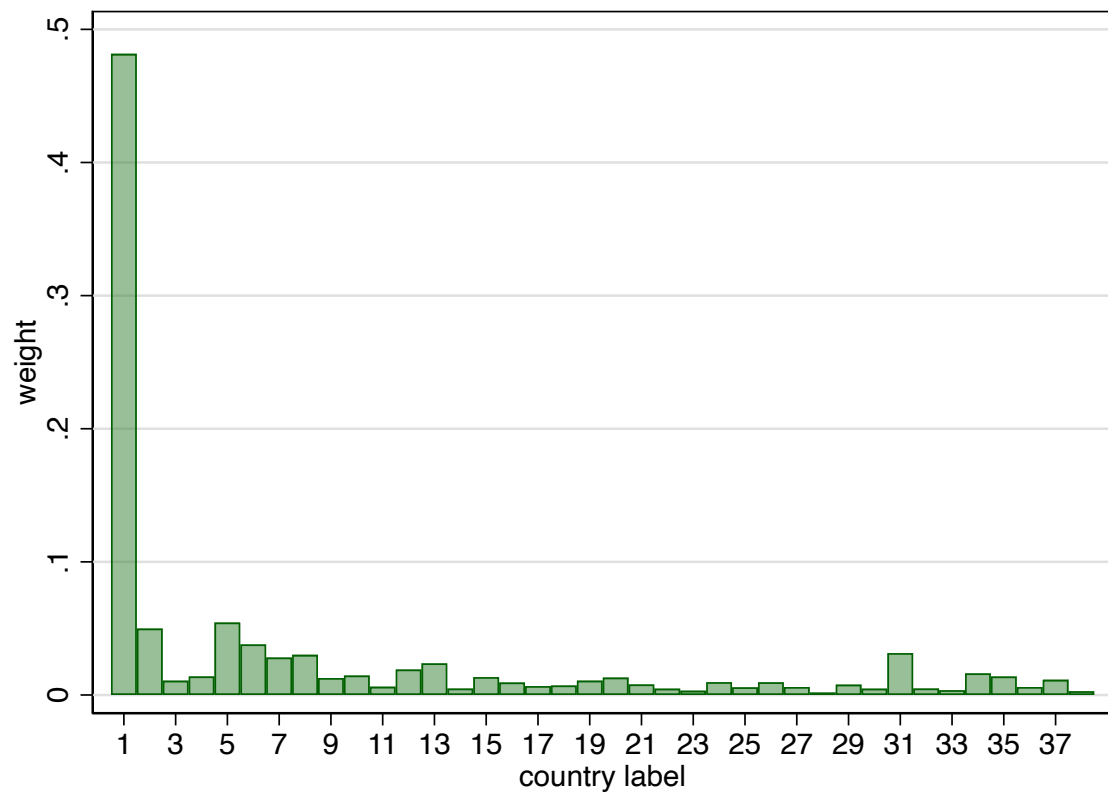


Notes:.

**Figure 6: Unemployment Benefits: Main Results**



**Figure 7: Rotemberg weights**



## 9 Tables

**Table 1:** Balance Table - Quick table using prepackaged command

	(1)	(2)	(3)
age	16.412 (2.956)	16.349 (2.802)	-0.063 (0.150)
E_Denrolled	0.720 (0.449)	0.710 (0.454)	-0.010 (0.027)
M_children	0.101 (0.302)	0.105 (0.306)	0.003 (0.017)
partner	0.113 (0.317)	0.094 (0.291)	-0.020 (0.014)
Entrep_total	71.934 (24.904)	69.455 (24.718)	-2.479 (1.641)
selfempl	0.061 (0.239)	0.072 (0.259)	0.011 (0.010)
empl	0.035 (0.185)	0.055 (0.228)	0.020** (0.009)
worry_job	0.401 (0.490)	0.425 (0.494)	0.024 (0.026)
R_sexunwilling	0.144 (0.351)	0.198 (0.399)	0.054** (0.022)
sex_pregnancy	0.742 (0.438)	0.738 (0.440)	-0.004 (0.025)
Rhiv_skillsALT	3.762 (1.247)	3.817 (1.238)	0.055 (0.076)
always_condom	0.517 (0.500)	0.511 (0.500)	-0.006 (0.039)
other_contraceptive	0.169 (0.375)	0.153 (0.360)	-0.016 (0.026)
empowerment	31.262 (24.889)	28.453 (24.226)	-2.809 (2.018)
M_idealmarry_ageF	23.920 (3.169)	24.036 (3.135)	0.115 (0.201)
Observations	2,002	3,964	5,966

Notes: Table notes go here



**Table 2: Balance Table - Age only**

	Treatment (1)	Control (2)	Difference (3)
<i>Panel A. Characteristics</i>			
Age	16.349	16.412	-0.063 [ 0.150 ]

Notes: Table notes go here

**Table 3: Balance Table**

	Treatment (1)	Control (2)	Difference (3)
<i>Panel A. Characteristics</i>			
Age	16.349	16.412	-0.063 [ 0.150 ]
Currently enrolled in school	0.710	0.720	-0.010 [ 0.027 ]
Has child(ren)	0.105	0.101	0.003 [ 0.017 ]
Married or cohabiting	0.094	0.113	-0.020 [ 0.014 ]
<i>Panel B. Economic Empowerment</i>			
Entrepreneurial ability index [0-100 score]	69.455	71.934	-2.479 [ 1.641 ]
Self-employed	0.072	0.061	0.011 [ 0.010 ]
Wage employed	0.055	0.035	0.020 [ 0.009 ]
Never worry to get a good job in adulthood	0.425	0.401	0.024 [ 0.026 ]
<i>Panel C. Control over Body</i>			
Had sex unwillingly in the past year	0.198	0.144	0.054 [ 0.022 ]
Pregnancy knowledge index [0-100 score]	0.738	0.742	-0.004 [ 0.025 ]
HIV knowledge index [0-100 score]	3.817	3.762	0.055 [ 0.076 ]
If sexually active, always uses condom	0.511	0.517	-0.006 [ 0.039 ]
If sexually active, uses other contraceptives	0.153	0.169	-0.016 [ 0.026 ]
<i>Panel E. Beliefs and Aspirations</i>			
Gender empowerment index [0-100 score]	28.453	31.262	-2.809 [ 2.018 ]
Suitable age at marriage for a woman	24.036	23.920	0.115 [ 0.201 ]

Notes: Table notes go here

**Table 4: Uganda: First Stage**

	Follow up		Endline	
	(1) Heard about	(2) Participated	(3) Heard about	(4) Participated
=1 treated	0.191*** (0.036)	0.159*** (0.016)	0.169*** (0.040)	0.154*** (0.022)
Control group mean	0.398	0.398	0.616	0.616
No. clusters (communities)	150	150	150	150
Observations	4,218	4,888	3,608	3,862

Notes: Table notes go here

**Table 5: Uganda: Main Results**

	Economic Empowerment		Control over the Body		Aspirations	
	(1)	(2)	(3)	(4)	(5)	(6)
=1 treated	0.271*** (0.043)	0.159*** (0.059)	0.525*** (0.038)	0.238*** (0.035)	0.270*** (0.039)	0.062 (0.043)
Time	follow-up	endline	follow-up	endline	follow-up	endline
Control group mean	-0.005	-0.006	0.002	0.015	-0.001	-0.006
No. clusters (communities)	150	150	150	150	150	150
Observations	4,831	3,810	4,831	3,810	4,831	3,810

Notes: Table notes go here

**Table 6: Effects of Copyrights on the Creation of New Operas**

	OLS			
	(1)	(2)	(3)	(4)
L & V x Post	2.201*** (0.404)	2.147*** (0.422)	2.263*** (0.472)	2.430*** (0.470)
L & V		0.320 (0.238)		
State fixed effects	Yes	No	Yes	Yes
Year fixed effects	Yes	Yes	Yes	Yes
Linear pretrend for L & V	No	No	Yes	No
State-specific linear pretrend	No	No	No	Yes
Pre-1801 mean	1.406	1.406	1.406	1.406
Observations (state-year pairs)	320	320	320	320
R2	0.800	0.726	0.800	0.819

Notes: Table notes go here

**Table 7: Effects of Unemployment Benefit Generosity**

	(1) Nonemployment duration	(2) Find job within 39 weeks	(3) Wage change between jobs	(4) New wage > 0.5 old wage
Discontinuity at age 40	1.932*** (0.528)	-0.013*** (0.002)	0.004*** (0.002)	0.004*** (0.001)
Mean of dep. var. around cutoff	114.663	0.842	-0.044	0.962
Observations	1,589,178	1,738,787	1,187,476	1,187,476

Notes: Table notes go here

**Table 8:** Bartik Instruments: OLS and TSLS Regression Results

	OLS		TSLS Bartik		TSLS Overidentified	
	(1)	(2)	(3)	(4)	(5)	(6)
$\beta$	-0.017*** (0.005)	-0.030*** (0.006)	-0.024*** (0.007)	-0.037*** (0.007)	-0.025*** (0.006)	-0.036*** (0.006)
F-stat			59.81	46.62	95.79	38.83
Controls	No	Yes	No	Yes	No	Yes
Observations	124	124	124	124	124	124

Notes: Table notes go here

**Table 9:** Bartik Instruments: Correlates of shares with high Rotemberg weights

	(1)	(2)	(3)	(4)	(5)	(6)	(7)
	Mexico	Philippines	El Salvador	China	Cuba	West Europe and others	Bartik
Log msa size 1980	0.054*** (0.018)	0.026 (0.021)	0.106*** (0.027)	0.057*** (0.019)	0.049 (0.060)	0.039*** (0.009)	0.059*** (0.009)
College share 1980	-0.545 (0.370)	0.559 (0.416)	0.692 (0.554)	1.318*** (0.389)	-0.828 (1.206)	0.530*** (0.175)	-0.021 (0.189)
Wage res native 1980	0.601 (0.388)	-0.428 (0.437)	0.595 (0.582)	-0.212 (0.408)	-0.199 (1.266)	0.052 (0.184)	0.267 (0.199)
Wage res imm 1980	-0.652* (0.361)	0.596 (0.406)	-0.856 (0.540)	0.152 (0.379)	-0.079 (1.175)	-0.209 (0.170)	-0.385** (0.185)
Mfg share in 1980	0.059 (0.202)	-0.379* (0.228)	0.268 (0.303)	-0.192 (0.213)	-0.653 (0.660)	0.230** (0.096)	-0.006 (0.104)
Observations	124	124	124	124	124	124	124
$R^2$	0.150	0.095	0.216	0.246	0.020	0.294	0.371

Notes: Table notes go here

## References

- Bandiera, O., N. Buehren, R. Burgess, M. Goldstein, S. Gulesci, I. Rasul, and M. Sulaiman (2020). Women's empowerment in action: evidence from a randomized control trial in africa. *American Economic Journal: Applied Economics* 12(1), 210–59.
- Giorcelli, M. and P. Moser (2020). Copyrights and creativity: Evidence from italian opera in the napoleonic age. *Journal of Political Economy* 128(11), 4163–4210.
- Goldsmith-Pinkham, P., I. Sorkin, and H. Swift (2020). Bartik instruments: What, when, why, and how. *American Economic Review* 110(8), 2586–2624.
- Nekoei, A. and A. Weber (2017). Does extending unemployment benefits improve job quality? *American Economic Review* 107(2), 527–61.
- Wolfers, J. (2006). Did unilateral divorce laws raise divorce rates? a reconciliation and new results. *American Economic Review* 96(5), 1802–1820.